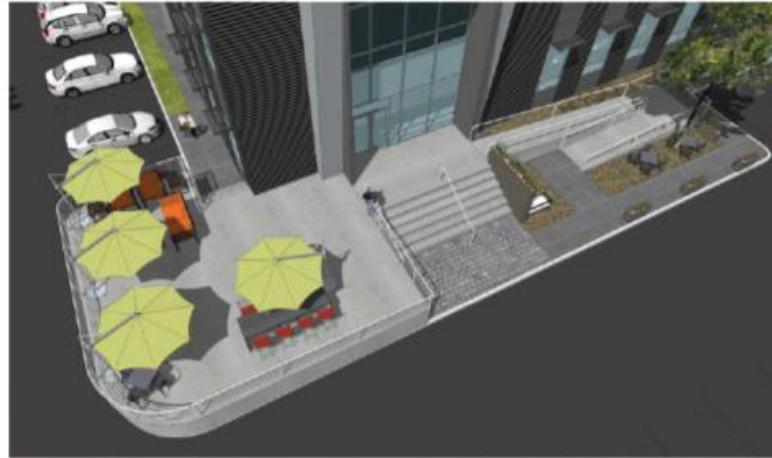


vesta PARK

TECOLOTE

AVAILABLE FOR LEASE
8,406 Sqm / 90,481 Sft
VPT-01



Adriana Eguía - aeguia@vesta.com.mx
T.+52 (664) 972 9473

 Vesta Industrial Real Estate

  @Vesta

www.vesta.com.mx

Building VPT-01

8,406 Sqm / 90,481 Sft

Construction Specifications

Wall:	Tilt-up walls
Floor:	Reinforced concrete floor 6"
Roof:	Standing Seam roof cal. 22 KR-18 Pintro
Skylights:	5% polycarbonate dome type
Clear height:	28 ft.
Column spacing:	15.24 x 18.28 m / 50 x 60 ft
Electrical substation:	225 KVA's
Interior lighting:	LED 350 Lux
Fire protection system:	Hose Cabinet System - NFPA
Docks:	Mechanical Dock Levelers 30,000 lbs

Advantages:

Land Area 1.2 million Sft

Available 2Q2020

Great location within Parque Industrial Pacífico and connectivity

Competitive and qualified workforce

KVAs availability and access to infrastructure and services

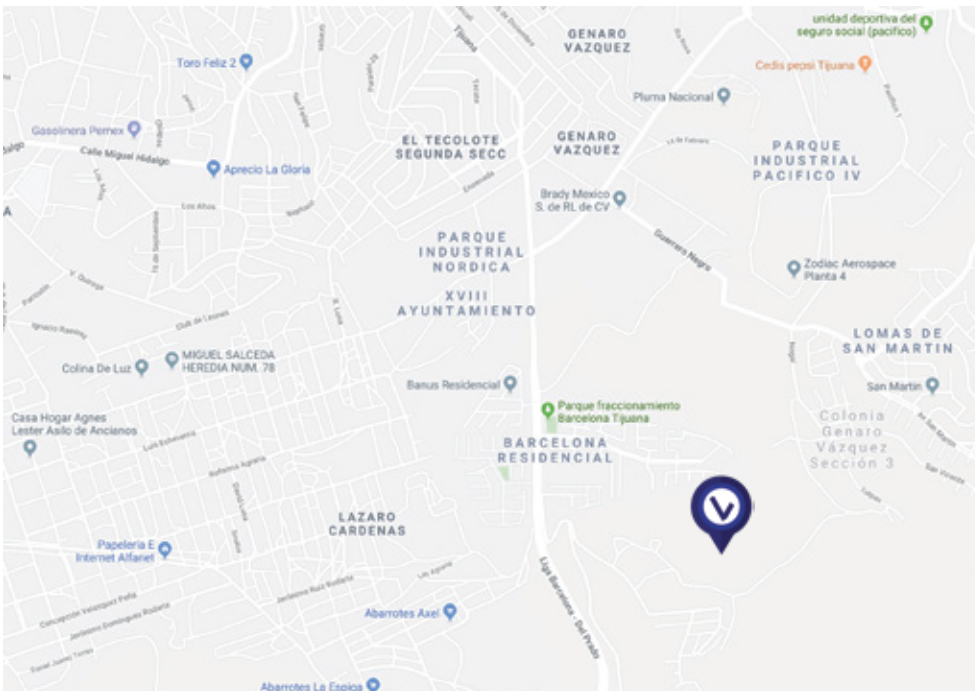
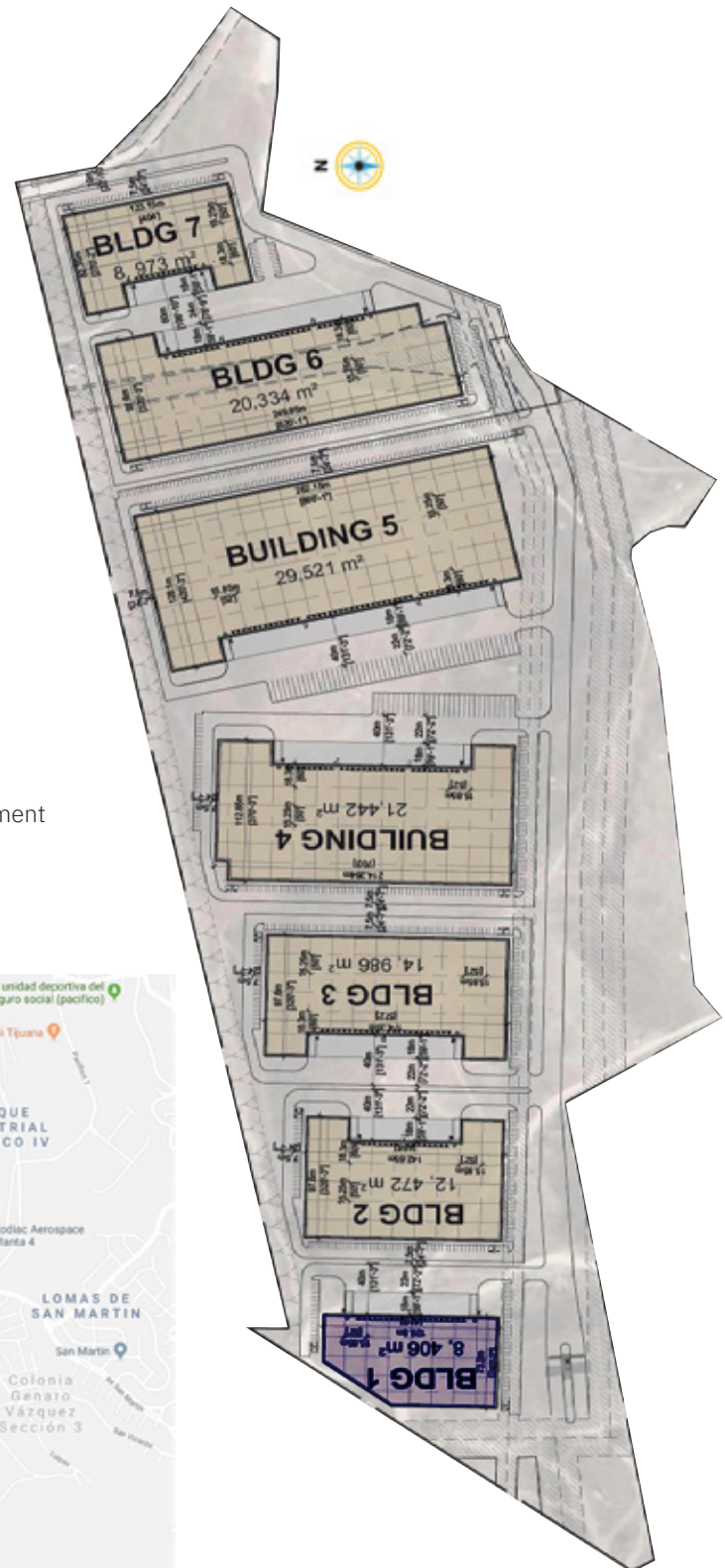
Competitive lease rate, competitive cost

Offer qualitative advantages for sustainable and effective business development

Available land with all services in place

Quick process to set-up an operation

Professional management



Vesta Park Tecolote,
Andador Vecinar #15801, Col. El Rosario
Del. San Antonio de los Buenos, C.P. 22675,
Tijuana, BC., Mexico

